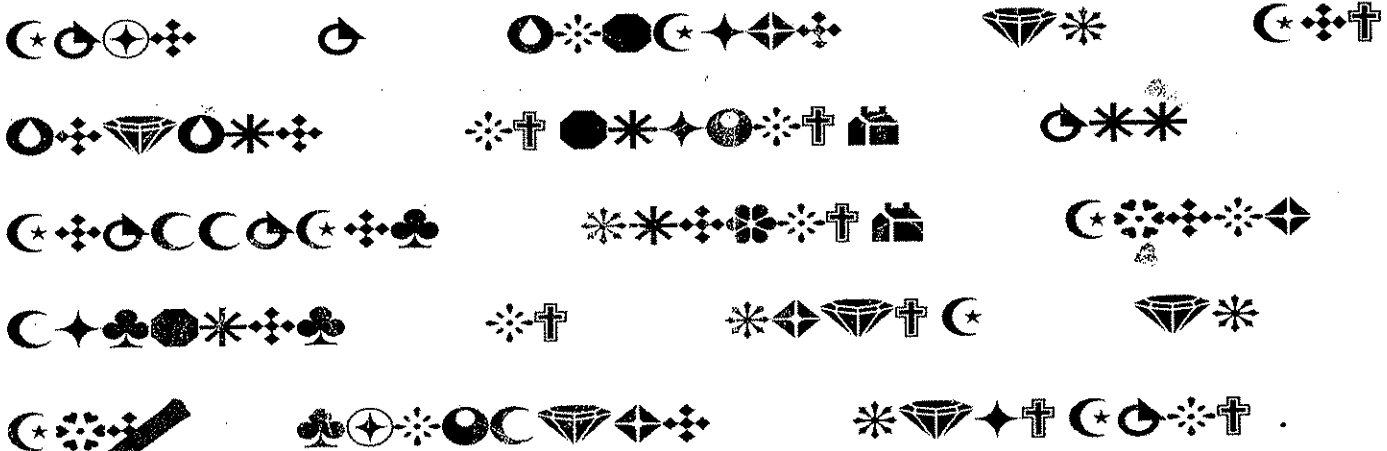


4. Solve the following cryptogram assuming the third word is picture and complete the instructions.

Hint: F= * , M= C , N= † , S= ♣ , and X= ✻ . Note the subtle differences between characters.



5. Take a picture with all teammates wearing either a saw, plunger, or golf club headpiece at Spoonman Creative at the Portland Saturday Market.

6. This clue will require three steps. First, we suggest making your way to Office Max at 930 NW 14th Ave to purchase **TWO** of the following options, all new and unused. There are bins and a separate check-out line dedicated to Great Urban Racers. Note: It is not required that you purchase your supplies specifically at Office Max.

- (a) Three packs of 12 or more pencils
- (b) One pack of 24 or more colored pencils
- (c) Two packs of eight or more markers
- (d) Two packs of loose-leaf paper

Next, donate your purchases to Schoolhouse Supplies in the courtyard at 13th Street and Lovejoy Street. Finally, take a picture of all teammates with their oversized school supplies as proof of your donation.

7. **DETOUR** (Complete one of the following two options):

Take a picture of all teammates posing with a real person wearing Converse All Star (Chuck Taylor) shoes.

OR...

Take a picture of all teammates posing with a real person wearing a cowboy hat.

8. Make your way to room 294 of the Smith Memorial Student Union building and recreate the sentence provided at the location with letters and words cut out from magazines. Glue the letters to the blank sheet of paper in order and get this clue sheet stamped once completed. All supplies will be provided. **This clue sheet must be stamped to receive credit for this clue. This clue is only available from 12:30-4:30pm. Plan accordingly.**

6. Take a picture of all teammates making a fish face (as shown in the picture on the right) with a larger than life Chinook salmon sculpture in the picture.
Hint: Unscramble these letters for the location of this sculpture: TOUSH RAKP



7. Make your way to the Columbia Sportswear Flagship Store on SW Broadway and complete the following challenge: Take Columbia Sportswear socks and zip the inner fleece into the outer shell, making sure all three connecting points and the zipper are engaged. **This clue sheet must be stamped to receive credit for this clue. This clue will only be available from 12:30-5:00pm. Plan accordingly.**
Portland, Oregon 97205

8. Take a single picture with all teammates with the answers to **both** of these riddles clearly visible.
(a) I opened in 1913 and was originally modeled after The Blackstone in Chicago.
(b) I was designed by A.E. Doyle and the first of 20 of me is located at SW 5th Ave and Washington St.

9. Visit the restaurant that makes pizza "the way it ought to be." Once there, take a picture of one teammate feeding the slice to the other teammate (Family Division teams must have all teammates visible in the picture). Please take one slice per team. Vegan option is available.

Roll's

10. Six men were in an elevator together when the lights went out. When the lights came back on, Fred Alberts was found stabbed. Detectives have interviewed witnesses and suspects and found 15 bits of helpful information, which YOU can find posted at On Deck Sports Bar & Grill in Portland. Enter the 13th Street entrance, examine the clues, and solve the mystery to answer the question:

Who killed Fred Alberts? _____

You must write your answer in the space provided and show it to the GUR staff member. If your answer is correct, they will stamp this clue sheet. **You may try to answer this clue up to three times. This clue sheet must be stamped to receive credit for this clue.**

11. Go to the Walk of Heroines, which honors "the women who have illuminated our lives." Take a picture of all teammates with the quote by Mae West clearly visible.

12. Take a picture of all teammates standing in front of the red, blue, and yellow version of the statue shown to the right.

Jamieson

KEY RULES TO REMEMBER:

1. Have Fun!!
2. No private transit (cars, taxis, bikes, inline skates, horses, etc. are not allowed).
3. A phone-a-friend and any high-tech devices are encouraged (laptops, GPS, etc.).
4. You have the option to skip ONE clue unless it is mandatory.
5. Call 911 in case of emergency.
6. You are not required to do the clues in order.
7. A Detour is two or more options of clues to do. You only need to complete one.
8. If a clue is missing or incorrect, you will receive a 30 minute penalty. If a mandatory clue is missing, you will be disqualified.
9. **The finish line is closed and the entire race course closes at 5:00pm. Please return to the finish if you haven't completed all of the clues.**

